

Meet me in Seattle

at the fair

Edward Chambreau

Moderato

Voice

Verse. (ad. lib)

Let's do a-way with in-tro-

Moderato

6

duc - tions Brush a - side for-mal-i - ty First on the a-gend-a is for you to spend a lit-tle

11

time with me! If you want to meet me meet me there! (Where?)

2
17

Meet me in Seattle

17

If you want to meet me I'll be there! _____ I will be your guy

17

22

Detailed description: This system contains measures 17 through 22. The vocal line (treble clef) begins with a half note G4, followed by quarter notes A4, B4, and C5. A half note D5 is tied to the next measure, where it is followed by a quarter note E5. The vocal line ends with a half note G4. The piano accompaniment (grand staff) features a steady eighth-note bass line in the left hand and chords in the right hand. The key signature has two sharps (F# and C#).

23

23

You will be my doll We will have a ball! _____

23

27

Detailed description: This system contains measures 23 through 27. The vocal line (treble clef) starts with a half note G4, followed by quarter notes A4, B4, and C5. A half note D5 is tied to the next measure, where it is followed by a quarter note E5. The vocal line ends with a half note G4. The piano accompaniment (grand staff) continues with the same eighth-note bass line and chords. The key signature has two sharps (F# and C#).

28

28

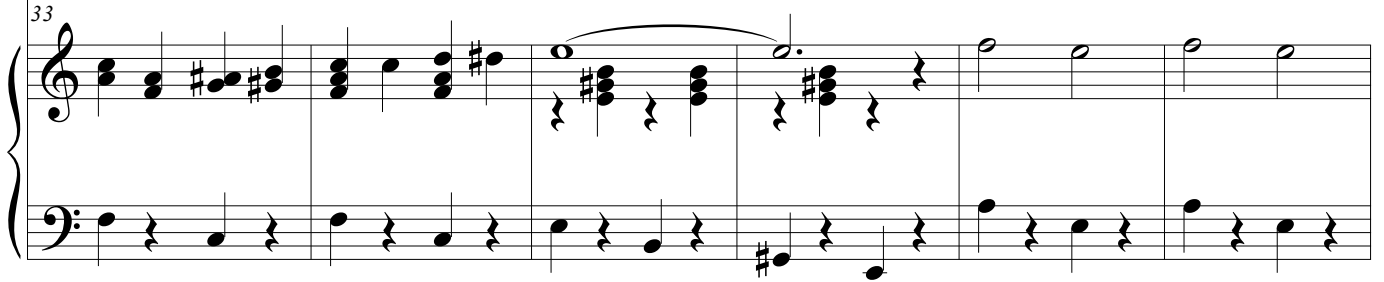
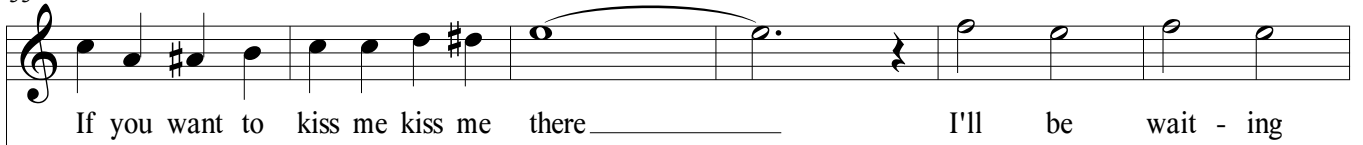
— Be-lieve me If you want to hug me hug me there! (Where?)

28

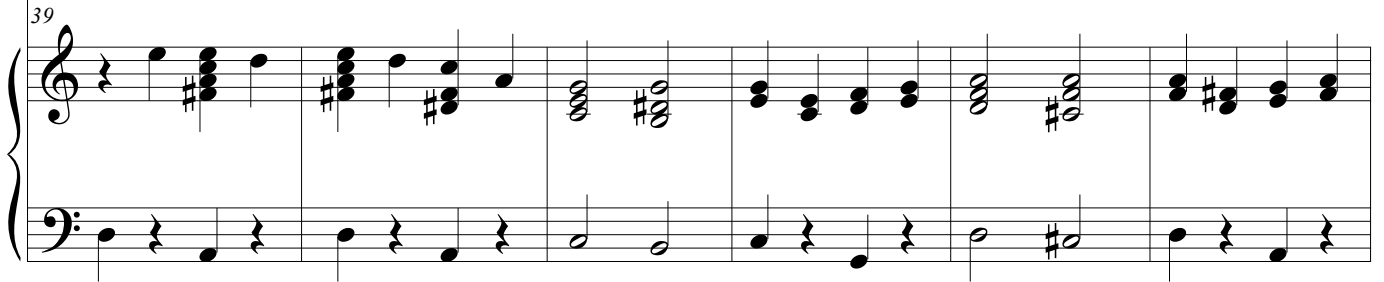
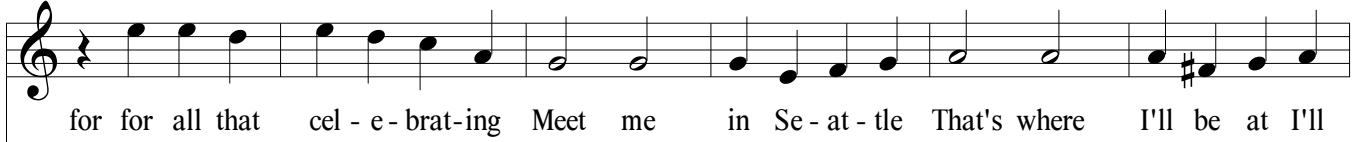
32

Detailed description: This system contains measures 28 through 32. The vocal line (treble clef) begins with a half note G4, followed by quarter notes A4, B4, and C5. A half note D5 is tied to the next measure, where it is followed by a quarter note E5. The vocal line ends with a half note G4. The piano accompaniment (grand staff) continues with the same eighth-note bass line and chords. The key signature has two sharps (F# and C#).

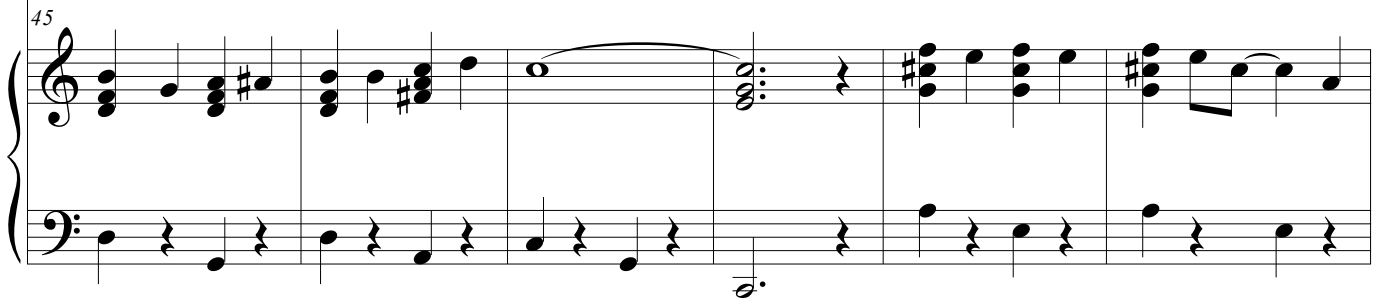
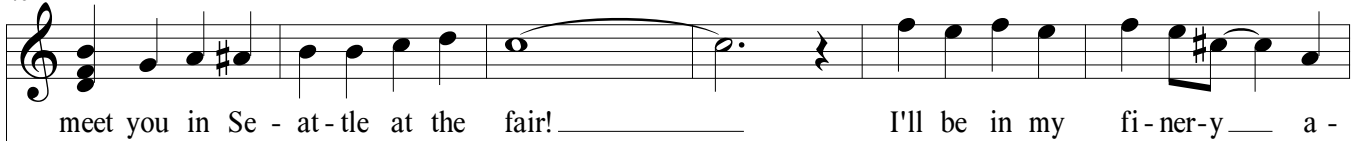
33



39



45



4
51

Meet me in Seattle

top a space age di-ner-y — I'll See you in Se-at-tle That's where I'll be at I'll

This system contains the first six measures of the song. The vocal line (treble clef) starts with a half note 'top', followed by eighth notes 'a', 'space', 'age', and a dotted quarter note 'di-ner-y' with a fermata. The piano accompaniment (grand staff) features a key signature of one sharp (F#) and a 4/4 time signature. The right hand plays chords and moving lines, while the left hand provides a steady bass line with eighth and quarter notes.

57

see you in Se - at - tle at the fair! _____ If you fail me

This system contains measures 7 through 12. The vocal line continues with 'see you in Se - at - tle' (half note), 'at the fair!' (half note with a fermata), and 'If you fail me' (half note). The piano accompaniment continues with chords and a steady bass line. Measure 12 ends with a half note in the bass line.

62

I'll be blue I want to ride that mon-o - rail with you Meet me in Se-at-tle

This system contains measures 13 through 18. The vocal line starts with 'I'll be blue' (half note), followed by 'I want to ride that mon-o - rail with you' (half note), and 'Meet me in Se-at-tle' (half note). The piano accompaniment continues with chords and a steady bass line. Measure 18 ends with a half note in the bass line.

67

1.

That's where I'll be at I'll meet you _____ in Se at tle _____ at the

73

— Meet me in Se - at - tle at the Fair The Fair I'll see you in Se -

79

at - tle at the fair! _____

Fine